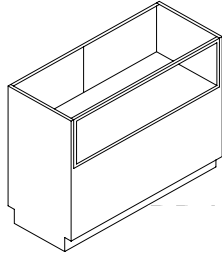
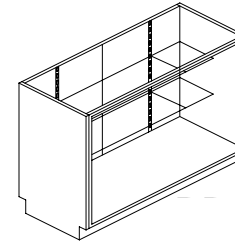


**Grice Showcase & Display Mfg., Inc.  
Rental Brochure**

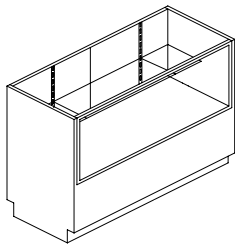
**Jewelry View Showcase**  
Available in 4', 5' and 6' lengths  
(38"H x 20"D with 12"H view)



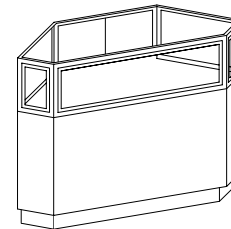
**Half View Showcase**  
Available in 4', 5' and 6' lengths  
(38"H x 20"D with 20"H view)  
(1-10"D & 1-12"D adjustable glass shelves)



**Half View Showcase**  
Available in 4', 5' and 6' lengths  
(38"H x 20"D with 20"H view)  
(1-10"D adjustable glass shelf)

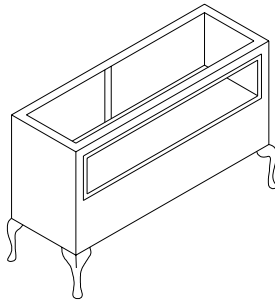


**Corner Showcase**  
Available in Jewelry View Only  
(38"H x 20"D with 12"H view)  
(24" rear rail, 41" front rail & 52" from point to point)

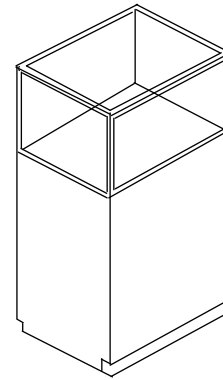


**Grice Showcase & Display Mfg., Inc.  
Rental Brochure**

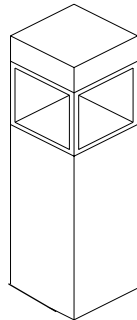
**Deluxe “Queen Anne” Showcase**  
**Available in Jewelry View Only**  
**(40”H x 20”D x 48”L with 12”H view)**



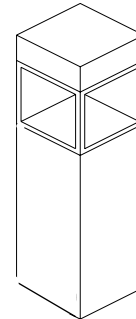
**Museum Tower**  
**(64”H x 20”D x 30”L with 20”H view)**  
**(Base 44”H)**



**Halogen “Hi-Lite” Tower**  
**(72”H x 16”D x 16”L with 16”H view)**  
**(Base 48”H & 8”H light cap)**



**Multi Level Tower**  
**(72”H x 20”D x 20”L with 52”H view)**  
**(Base 12”H and three adjustable glass shelves)**



# Grice Showcase & Display Mfg., Inc.

## Rental Brochure

### General Information

Grice Showcase & Display rents showcases to exhibitors at select industry events. Since we are the manufacturer, our goods are always in very good to excellent condition. We sell from this inventory and replace on a regular basis, assuring you the best quality rental showcases available.

All showcases are equipped with light & lock. Lighting style will vary depending on the showcase/display style selected. All jewelry, half, full view and corner showcases come with slimline octron light and 4100K bulb.

All showcase exteriors are covered in decorative high pressure laminate in a variety of colors.

Grice Showcase & Display also has available "deluxe" high-end cases. The cases include lighting, mirror back doors and locking storage doors.

Grice Showcase reserves the right to substitute, pending availability of cases ordered. Cases are available on a first come first serve basis.

Grice Showcase is not responsible for electrical hook-up of showcases. Showcases use 40 watts, hi-lite & multi level towers 75 watts, museum towers 40 watts and upright displays 30 watts.

**Grice Showcase & Display Mfg., Inc.**

2323 Center Park Drive

Charlotte, NC 28217

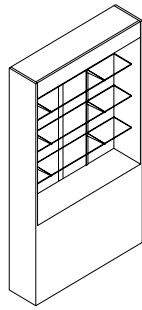
704-423-8888

704-423-8899 fax

[www.griceshowcase.com](http://www.griceshowcase.com)

Revised October 2010

**Upright "See Thru" Display**  
(84"H x 12"D x 48" with 47"H view)  
(Base 29"H, 8"H light cap and 3 adjustable 8"D glass shelves)



**Upright Full View Display**  
(84"H x 12"D x 48" with 73"H view)  
(8"H light cap and 5 adjustable 8"D glass shelves)  
Note: No doors-open unit

